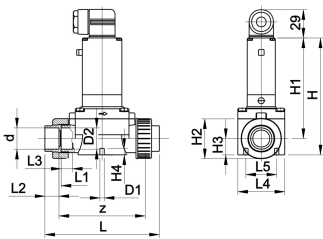
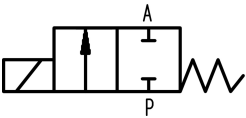



**Solenoid valve type 165**  
**Straight-through valve 2/2 ways**
**Model:**

- Function A, PN 0.5-6bar
- Material PVC-U: with solvent cement socket metric
- Protection class IP 65
- Electrical connection: cable plug
- With manual override



d (mm)	DN (mm)	kv-value ( $\Delta p=1$ bar) (l/min)	PVC-U EPDM 24V DC	PVC-U FKM 24V DC	PVC-U EPDM 240V AC	PVC-U FPM 240V AC
20	15	83	<b>199 165 022</b>	<b>199 165 072</b>		
25	20	100	<b>199 165 023</b>	<b>199 165 073</b>		
32	25	233	<b>199 165 024</b>	<b>199 165 074</b>		
40	32	267	<b>199 165 025</b>	<b>199 165 075</b>		
50	40	500	<b>199 165 026</b>	<b>199 165 076</b>		
63	50	600	<b>199 165 027</b>	<b>199 165 077</b>		
20	15	83			<b>199 165 012</b>	<b>199 165 002</b>
25	20	100			<b>199 165 013</b>	<b>199 165 003</b>
32	25	233			<b>199 165 014</b>	<b>199 165 004</b>
40	32	267			<b>199 165 015</b>	<b>199 165 005</b>
50	40	500			<b>199 165 016</b>	<b>199 165 006</b>
63	50	600			<b>199 165 017</b>	<b>199 165 007</b>

d (mm)	H (mm)	H1 (mm)	H2 (mm)	H3 (mm)	H4 (mm)	L (mm)	L1 (mm)	L2 (mm)	L4 (mm)	L5 (mm)	z (mm)
20	148	122	53	22	8	148	110	16	63	40	116
25	148	122	53	22	8	154	110	19	62	40	116
32	175	137	76	31	15	190	141	22	85	45	147
40	175	137	76	31	15	198	141	26	85	45	147
50	212	160	105	42	15	254	192	31	115	45	198
63	212	160	105	42	15	268	192	38	115	45	198

1300 PIPING (1300 747 464)

The technical data are not binding and not expressly warranted characteristics of the goods.  
They are subject to change. Our general conditions of sale apply

[www.paas.com.au](http://www.paas.com.au)